



**Electrolux**  
PROFESSIONAL

## Stainless Steel Preparation 1570 mm Stainless Steel Shelving with 4 Solid Shelves

ITEM # \_\_\_\_\_

MODEL # \_\_\_\_\_

NAME # \_\_\_\_\_

SIS # \_\_\_\_\_

AIA # \_\_\_\_\_



132948 (NSC1570)

Stainless steel Shelving with  
4 solid shelves, 1570mm

### Short Form Specification

Item No. \_\_\_\_\_

Made in stainless steel. The two intermediate shelves are height-adjustable. Load capacity per shelf: average of 150 kg/m<sup>2</sup>, evenly distributed.

### Construction

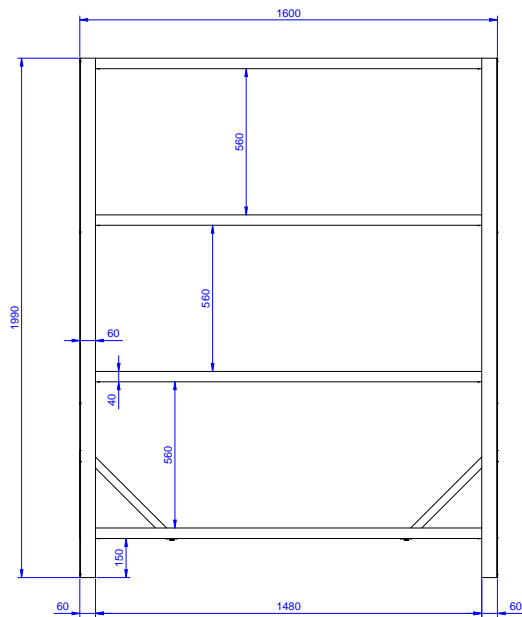
- Designed to bear a maximum total load of 600kg; the load can be positioned at various heights thanks to the shelves.
- Model constructed entirely in stainless steel, with solid stainless steel shelves.
- Heavy duty construction entirely in AISI 304 stainless steel to offer maximum durability.

APPROVAL: \_\_\_\_\_

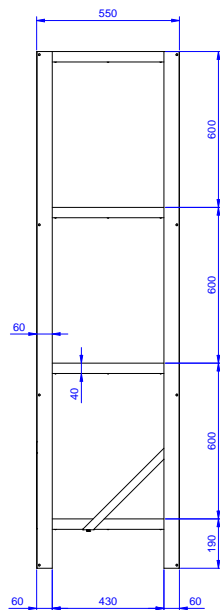


Experience the Excellence  
[www.electroluxprofessional.com](http://www.electroluxprofessional.com)

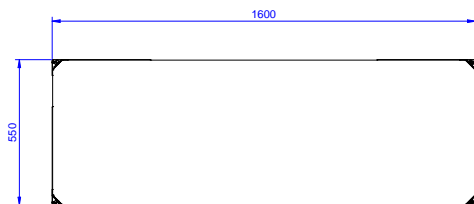
## Stainless Steel Preparation 1570 mm Stainless Steel Shelving with 4 Solid Shelves



Front



Side



Top

### Key Information:

|                                     |           |
|-------------------------------------|-----------|
| <b>External dimensions, Width:</b>  | 1600 mm   |
| <b>External dimensions, Depth:</b>  | 550 mm    |
| <b>External dimensions, Height:</b> | 1990 mm   |
| <b>Max loading weight:</b>          | 600 Kg kg |
| <b>Shelves number:</b>              |           |
| <b>Net weight:</b>                  | 45 kg     |